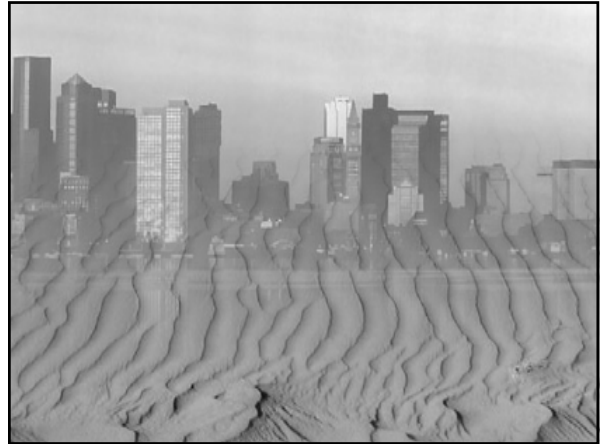


The Massachusetts Reclaimed Water Program

Experience and New Initiatives



**Low flow in our
rivers and streams**

Stressed Basins



National Water Use

- 32% agricultural, recreational, commercial, and industrial use
- 28% toilet flushing
- 23% bathing
- 14% for laundry and dishwashing
- 3% drinking and cooking



Reclaimed Water Use Goals

- Reduce stress on over-used water resource areas
- Provide a safe and affordable water source for uses other than directly potable
- Increase public awareness and promote acceptance
- Promote advancement of I/A technology

Massachusetts Regulatory Approach

- Initial guidelines developed in 1999
- Hybrid of other state programs & requirements
- Rigorous water quality criteria
- Best Management Practices (BMPs)
- Enforceable contractual agreements
- Public awareness

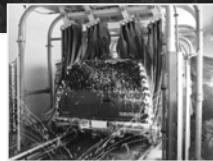
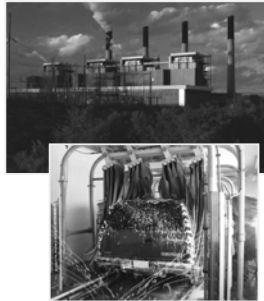
Reclaimed Water: Allowable Uses

- Golf courses – spray irrigation
- Landscaping – nurseries
- Toilet flushing
- Artificially recharging aquifers



Pilot Program

- Evaluate uses not specifically listed in guideline
 - Drip irrigation
 - Powerplant process and cooling water
 - Automated car wash



Treatment Plant Criteria

- Must meet specific water quality criteria/monitoring
- Must have permitted alternative discharge site for golf course and landscaping use
- Must have Class 1 reliability and redundancy
- Must have contractual agreement



Representative Standards for Reclaimed Water

Land Use	Turbidity (NTU)	Fecal Coliform/100 ml
Urban Reuse	<2	Median ND*, max 14-7 day sample
Toilet Flushing	<5	Max 100
Aquifer recharge	<2	Median ND*, max 14-7 day sample
	<5	Max 200

ND* = non-detectable

Artificial Aquifer Recharge

- Groundwater discharge into an approved Zone II is considered reuse
- Zone II boundary alteration
- Time of travel evaluation – treated water quality criteria
- Zone II Nitrogen Loading Model
- Monitoring of groundwater



Challenges

- Balancing Act
 - Cost – WWTP & Monitoring
 - Public Health
- Public Perception
- Public apathy
- Victim of our own technology
 - Analysis of emerging pollutants



New Program

- MassDEP developing new regulations
 - 2003: Study by CH2M HILL
 - 2004: EPA Water Reuse Guidelines
 - 2005: Task force
 - Our Experience

MassDEP Task Force

- Local officials
- Consultants
- Environmental groups
- Industry representatives
- MassDEP personnel

Proposed New Uses

- Irrigation of fields, playgrounds, and ballparks
- Residential irrigation
- Crop irrigation
- Powerplants
- Industrial Uses



Schedule

- Task force meetings
- Draft regulations by summer 2006



MassDEP Contact

Alan Slater

1 Winter Street

Boston, MA 02108

t: 617.292.5749

e: alan.slater@state.ma.us

<http://www.mass.gov/dep/water/wastewat.htm>